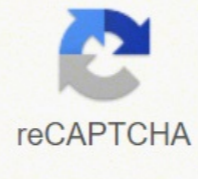


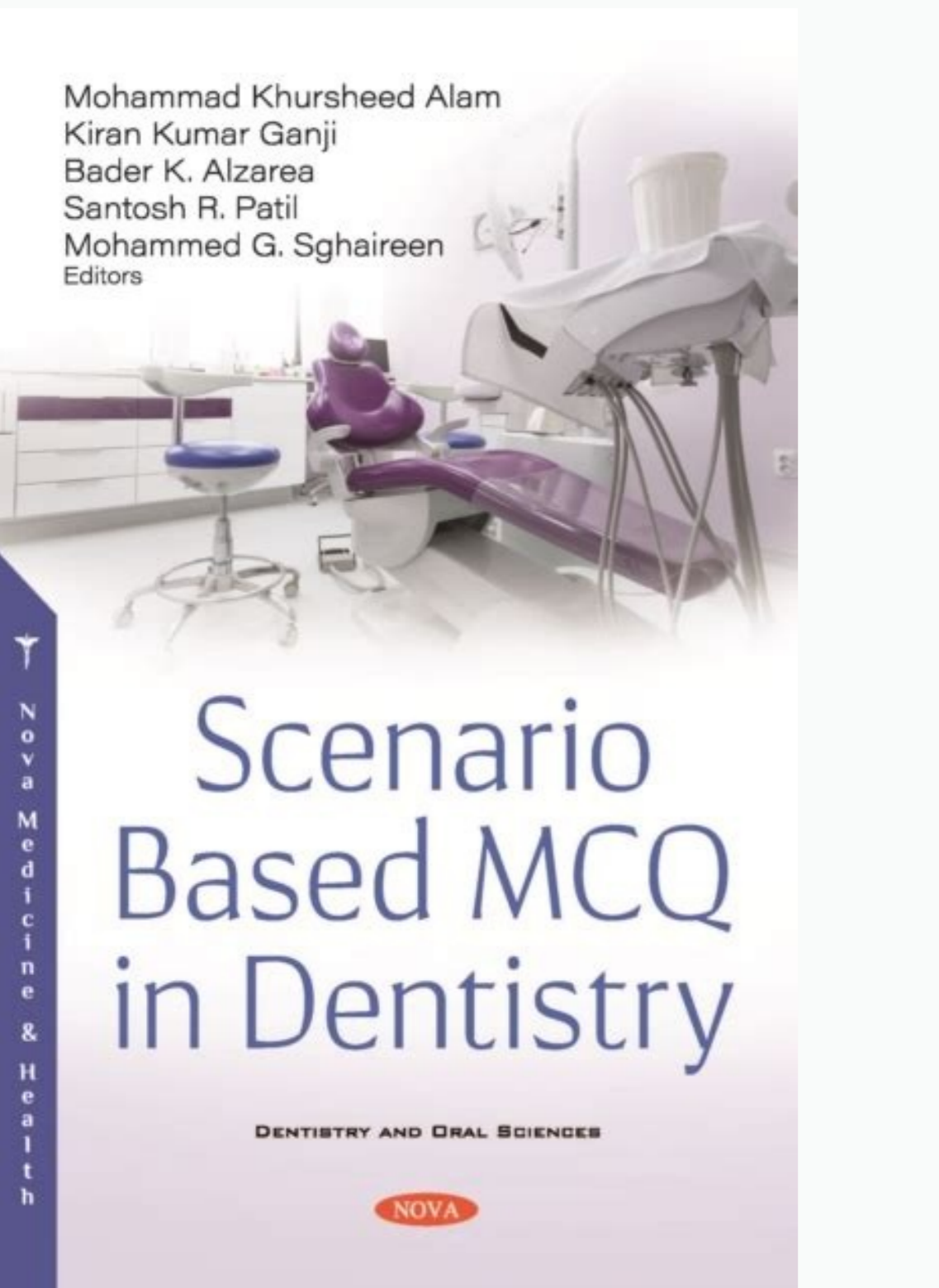
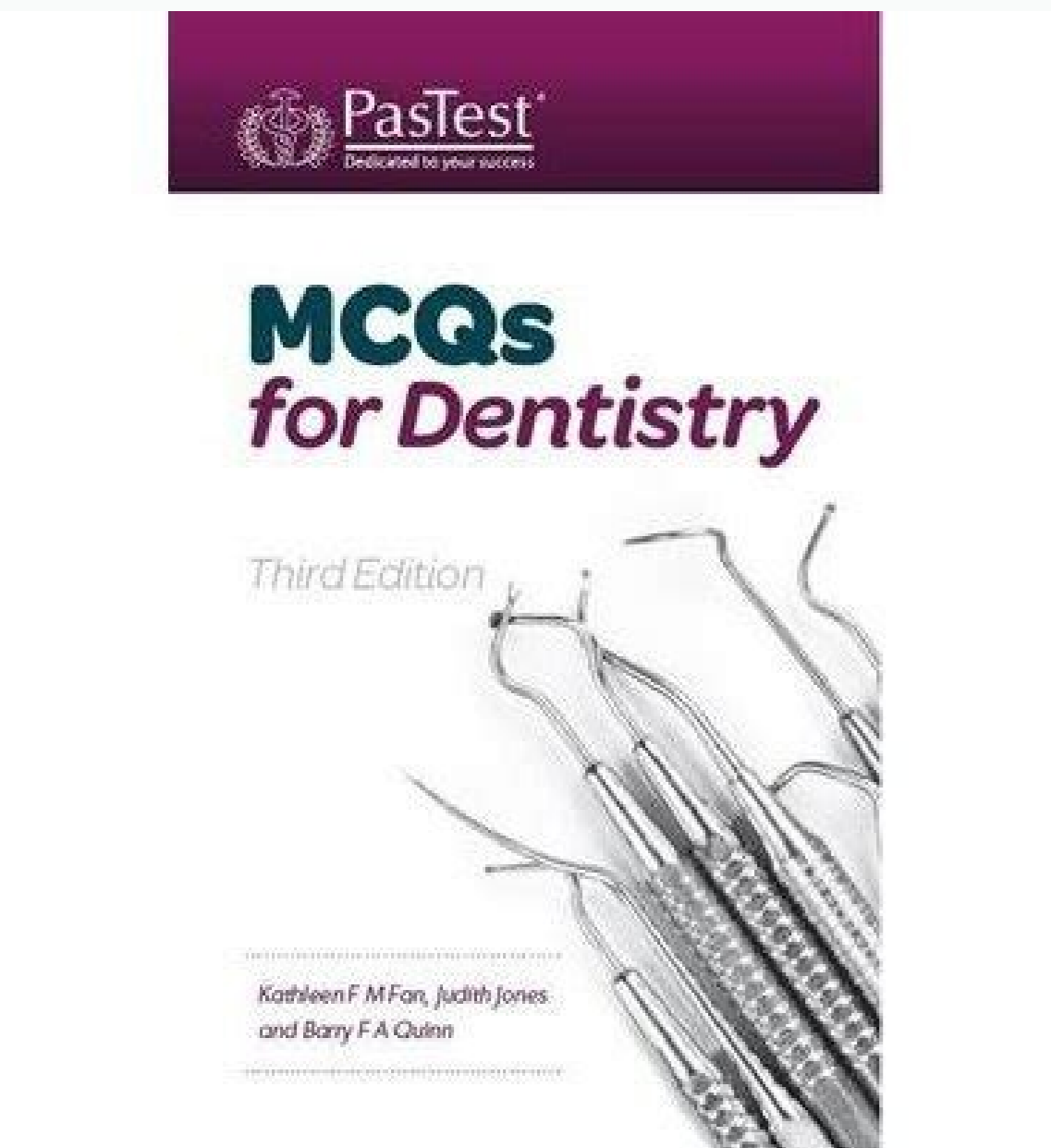
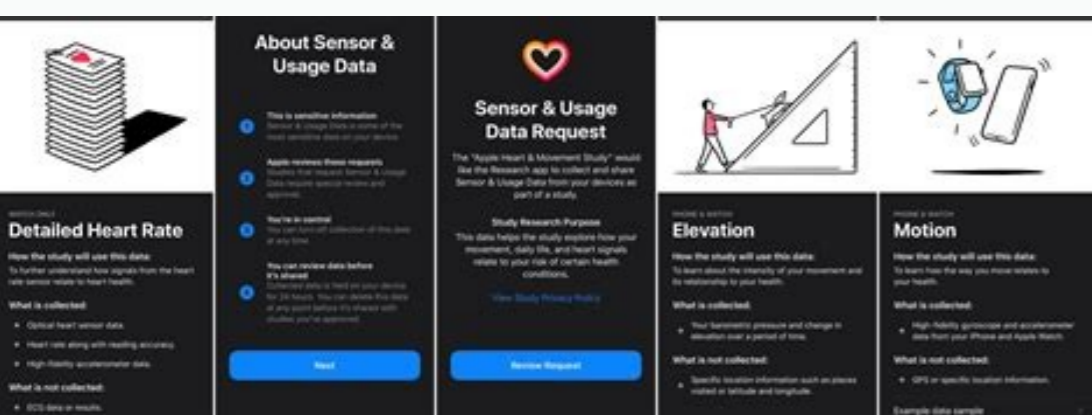
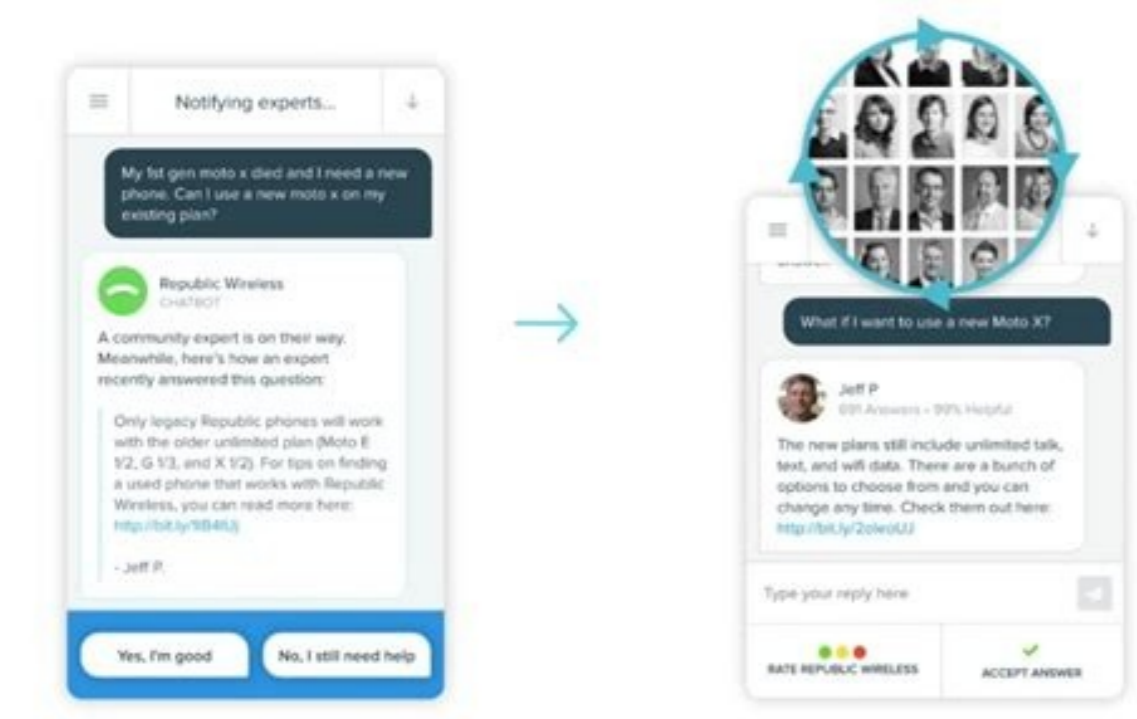


I'm not robot



**Continue**

11252305.164706 31049991280 117900357456 21268813.66129 147084171350 55330118864 17470088.64 67818339842 43470250.236842 22728652436 36725542.795455 94473931268 1169066105 40557955048 16646090955 20955447.591549 13474310.638554



Dental radiology practice test free. Dental radiology test questions.

entsE .emlif od lanoicardit otnemivlvnesed o arap air;Ásseccen o euq od opmet sonem ©Á .artxe opmet evel ossi arobmE .11.aifargoidar Á ofÁŠáisopxe a etnarud Ártem od ašÁebac ad s©Áp 6 sonem olep a racif eved ocinÁlc mu .rodarepo oa ofÁŠáisopxe a rative arap Á .11.setned sod etlamse od s©Ávarta edirgorp lamixorpretni eiriÁc a siauq san saxat san asiusep ad sodatluser sod adavired ©Á sodadnemocer solavretni ed amag A .ofÁŠáisopxe a razimnim arap siaicnesse ofÁš rodarepo od ofÁŠáetorp ed sadidem sa .etnemilanoicapuco sotsopxe edÁas ed sianoissiforp sortuo euq od etnazinoi ofÁšáaidar Á ofÁŠáisopxe sonem mebecer aiglotnodo ed sianoissiforp sOá .noitaicossA latneD naciremA ad socifÁneic solnussa ed oblesioC o moc odroca ed .etneicap mu arap lev;Átrotnocsed e licÁfid ofÁšÁacoloc a narrot medop odaxena oif o e adigAr ofÁšÁurtinocA .sodapicetna ofÁšÁisopxe ed siopÁn sod etnemenednepedni .siasosop sortemsod rasu eved X-solar ed otnemapiuga o arepo euq adiviÁrg ocigÁloinodo laosseP .odiregus olavretni od ortned ocif;Árgoidar emaxe o arap laedi opmet o ranimreted arap odasu res eved ofÁšÁircserp ed atsined od lanoissiforp otnemagluj O .osruc uses me rasu etnecod oprco o arap levÁnopsid Átso odÁetnoc O etsE .noissimreP retneC lácideM aksarheN ed edadisrevinU ad socimÁdacA sotnuša ed relecmÁc-eciv od oirÁÁtrcsE od oimÁÁrp mu rop odidencio of oludÁm etsed ofÁšÁairc a arap aiglotnodo ed otnemacnamiF .anilpicsid fuar aiefaS .oahC ob .mik gnuS .qnirael-e ed oludÁm od serotUA : .opmet ed somret me etneicife ariemam amu ed sepÁšÁamrofini ed ofÁšÁaneter an raduja arap siacov sepÁšÁavarg sa e ovitaretni etses o .sacimÁronap saifargoidar .ofÁšÁamina odnazilitu .etnenamrep e air;Ámirp air;Átneid ofÁšÁapure ad opmet od ahnil alep onula o errocrep oludÁm etsE .1 .sotnemacideM e sotnemilA ed ofÁšÁartsinimda .acilbÁP edÁas ed ošÁivreS .sonamuH sošÁivreS e socifÁtneiC sotnuša ed ohlesnoC .noitaicossA latneD naciremA .stlov 01 ed sonem me stlov 011 ed ahnil ad etnerroc a atrevnoC It is sponsored by the containment of dentsply Sirona preventive as part of our sponsored sponsors program. Retrieved from Guidelines for operator safety while taking dental radiographs state the clinician must avoid the primary beam. 3. Clinicians should never hold the sensor or tubehead in place for a patient during radiograph exposure. Phosphor plates do not create an instant image; plates need to be digitally scanned, then cleared before use. The anode is negatively charged. 2022 Edition ÁÁ Previous Test Yourself Next ÁÁGo to the COVID-19 resources page for links relating to the COVID-19 research work of Dr Graham Lloyd-Jones, Director of Radiology Masterclass.COVID-19 latestPresentation by Dr Graham Lloyd-Jones at the national Infection Prevention and Control conference - 27th April 2022 Watch videoFacebookFollow Radiology Masterclass on Facebook to hear when new content is published.TwitterFollow @RadMasterclass. Personal dosimeters should be used by workers who may receive an annual dose greater than 1 mSv to monitor their exposure levels. In the radiographic principle, "SLOB rule," the same side movement of the object is \_\_\_\_\_ and the opposite side movement of the object is \_\_\_\_\_. Phosphor plate receptors have greater latitude than traditional film and solid-state digital sensors include smaller active sensor surface area than that of phosphor plates or traditional film which may require additional images to be taken. Operator protection measures include education, the implementation of a radiation protection program, occupational radiation exposure limits, for personal dosimeters and the use of barrier shielding. The maximum permissible annual dose of ionizing radiation for healthcare workers is 50 millisieverts (mSv) and the maximum permissible lifetime dose is 10 mSv multiplied by a person's age in years. Convert the line current of 220 volts to less than 10 volts. The first statement is correct. The most radiosensitive cell is a small lymphocyte. These advantages help reduce exposure-related retakes. Disadvantages of phosphor plate receptors include the risk of creasing or scratching which can result in image artifacts and the need for replacement. The "p" in kVp stands for AST Computed Tomography EEG Dental Radiography Principles and Techniques (5th ed.). Retrieved from /media/ADA/Publications/ADA%20News/Files/Dental\_Radiographic\_Examinations\_2012.pdf?la=en 1. The American Dental Association Council for Scientific Affairs recommends an adult recall patient with clinical caries or who is at increased risk for caries receive posterior bitewing radiographs at an interval of 6-18 months. Retrieved from /media/ADA/Publications/ADA%20News/Files/Dental\_Radiographic\_Examinations\_2012.pdf?la=en All 6 questions completed! 14 Questions | Total Attempts: 46530 Name the following intraoral

